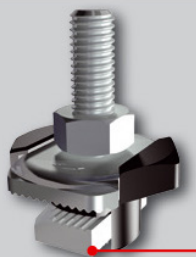


Optimised connection elements



FHS Clix

The unique stop element on the clix-elements facilitates the precise and error-free 90°-rotation in the channel.

The special spring leg on the clix-elements ensures the required pressure in the channel for a simple adjustment of the element.



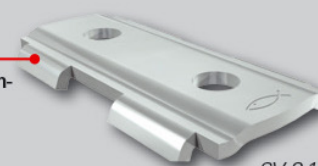
FSM Clix P

The unique and disappearing thrust block on the plastic holder of the sliding nut Clix P guarantees a **connection without plastic insert** in order for a secure metallic connection.



FSM Clix M

The characteristic retaining brackets on the connector elements guarantee the **form-fitting installation** in the channel.



SV 31

